



Gunston
MIDDLE SCHOOL

BUILDING
OUR
LEGACY

Rising 6th Grade Academic Planning



Gunston Administrators



Carolyn Jackson
Principal

Assistant Principal

Khetiwe Hudson - Rising 6th

Director of Counseling Services

Dr. Kevon Bruce

Dean of Students

Tyrone Stewart

Instructional Technology Coordinator

Rayla Parquet

Activities Coordinator

Luis Matos

Facilities Manager

Kathy Harris-Thomas

Gunston Student Services Team

School Counselors

Jaelin Gibbs-
Traditional & Montessori

Marlene Cordero-English Learners

Sharon Kolody-Immersion



Follow Us on Social Media



Twitter: GMS_Counselors



Instagram: Gunston_Counseling



TikTok: GMS_Counseling

Additional Staff Include:

Social Worker, Psychologist, Interlude Therapist, Substance Abuse Counselor



Agenda



- * Welcome & Introductions**
- * Gunston's Programs**
 - Academic
 - Electives
 - After-School
- * Student Support & Social Emotional Learning**
- * Resources to Support a Successful Home-School Partnership**

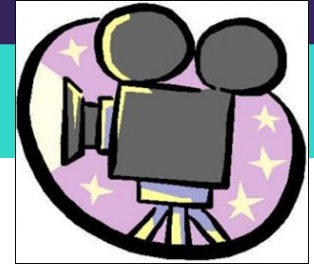


Inclusion Activity



Describe in **ONE WORD** a feeling you had when you were going into middle school.





Welcome to Gunston Video



Student Support

Counselors **support, advocate, and collaborate** with school staff and families **to promote success in academic achievement, college and career readiness and the social emotional development** of students.

Counselors provide . . .

- * Classroom lessons
- * Small groups
- * Individual counseling

Social emotional learning focuses on . . .

- * Self-Awareness
- * Self-Management
- * Social Awareness
- * Relationship Skills
- * Responsible Decision-Making



Students may have the same counselor throughout middle school.



Class Schedule

PURPLE DAY	TEAL DAY	HORNET DAY
1ST 7:50 - 9:21 (91 min)	2ND 7:50 - 9:21 (91 min)	B SCHEDULE - 6th grade
5 min	5 min	1ST 7:50 - 8:33 (43 min)
TA 9:26 - 9:56 (30 min)	TA 9:26 - 9:56 (30 min)	5 min
4 min	4 min	2ND 8:38 - 9:21 (43 min)
3RD 10:00 - 10:51 (51 min)	3RD 10:00 - 10:51 (51 min)	5 min
4 min	4 min	TA 9:26 - 9:56 (30 min)
5TH 10:55 - 11:40 (45 min)	4TH 10:55 - 11:40 (45 min)	4 min
B LUNCH (6th) 11:44 - 12:14 (30 min)	B LUNCH (6th) 11:44 - 12:14 (30 min)	3RD 10:00 - 10:51 (51 min)
5TH 12:18 - 1:00 (42 min)	4TH 12:18 - 1:00 (42 min)	4 min
4 min	4 min	4TH 10:55 - 11:38 (43 min)
7TH 1:04 - 2:35 (91 min)	6TH 1:04 - 2:35 (91 min)	B LUNCH (6) 11:42 - 12:12 (30 min)
		5TH 12:16 - 1:00 (44 min)
		4 min
		6TH 1:04 - 1:47 (43 min)
		5 min
		7TH 1:52 - 2:35 (43 min)

School Hours

7:50 - 2:35 pm

Breakfast

7:20 - 7:40 am

Lunch

11:42 am - 12:14 pm - All 6th grade

After School Program

Teacher Office Hours, Sports, Clubs

PM 1: 2:40 - 3:10 pm

PM 2: 3:15 - 4:05 pm

Gunston PRIDE

A common set of expectations for all students at Gunston

P	Prepared	<ul style="list-style-type: none">• Be ready to learn• Move with a purpose• Use time efficiently
R	Respect	<ul style="list-style-type: none">• Follow classroom expectations• Be considerate of others• Listen & respond appropriately to staff• Use kind and respectful language
I	Integrity	<ul style="list-style-type: none">• Take responsibility for your actions• Learn from your mistakes• Be a positive role model to others
D	Determination	<ul style="list-style-type: none">• Have an “I can” attitude• Do your best• Stay on task
E	Excellence	<ul style="list-style-type: none">• Make positive choices• Value each other’s ideas & opinions• Be open-minded



Academic Programs



- * Traditional
- * Spanish Immersion
- * Montessori
- * English Learners

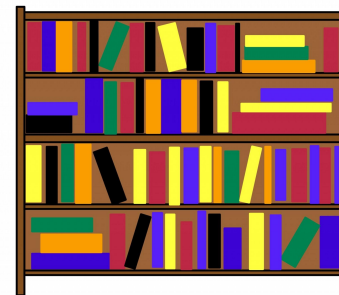
Special Education Services

- * Students will continue to receive services in all programs
- * IEP meetings for the transition to middle school will be held with both elementary and Gunston staff
- * Families will receive progress reports quarterly from Case Carriers



Traditional Program: Core Classes

- * English 6
- * US History
- * Science 6
- * Math 6 or Pre-Algebra for 6th Graders*
- * Disciplinary Literacy or Structured Literacy*
- * Health and Physical Education 6



***More information later in the presentation**



6th Grade Literacy/Reading Options (Traditional Students Only)

- ✧ **Full-Year Literacy:** This course is available for all Traditional students who prefer to take Literacy for the full year.
- ✧ **Structured Literacy I:** This course is recommended for students who require additional support with specific reading skills.
- ✧ **Semester Spanish:** This course gives students the opportunity to explore Spanish for one semester (September - February **or** February - June), and is paired with **Literacy/Reading** for the other semester. This course does **not** offer high school credit. It is highly recommended that students enrolled in this course are reading and demonstrating mastery on grade level.

The levels of Spanish may range from introductory to fluent speakers.



Spanish Immersion Program: Core Classes

- * Spanish Language Arts 6
- * Spanish Immersion US History
- * Immersion Science 6
- * English 6
- * Math 6 or Pre-Algebra for 6th Graders*
- * Health and Physical Education 6

¡hola!



Montessori Program: Core Classes

- * Montessori English 6
- * Montessori Science 6
- * Montessori US History 6
- * Montessori Reading 6
- * Montessori Math 6 or Pre-Algebra for 6th Graders*
- * Health and Physical Education 6



* More information later in the presentation



English Language Development Program (ELD)

EL sheltered students are grouped by English language proficiency into four levels:

ELD 1

- * English
- * ELD (Formerly ELD Reading)
- * Social Studies
- * Science
- * Math
- * Health & Physical Education
- * Electives

ELD 2

ELD 3

ELD 4

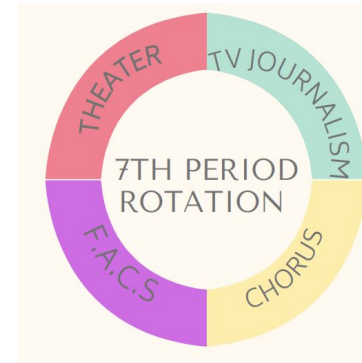
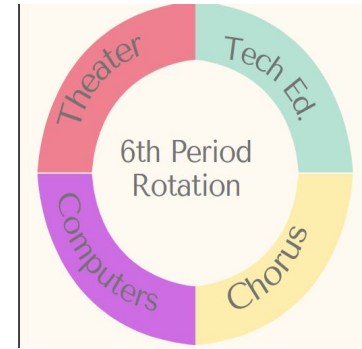
- * English
- * ELD (Formerly ELD Reading)
- * Math
- * Social Studies
- * Science
- * Health & Physical Education
- * Electives



Elective Option # 1

Exploratory Wheel

- * Try the various electives in middle school
- * Rotation happens every quarter
 - * Business & Information Technology (Computers)
 - * Chorus
 - * Family & Consumer Science (FACS)
 - * Video Journalism
 - * Technology Education (Tech Ed)
 - * Theater Arts (Drama)



Students are scheduled randomly to each wheel and requests cannot be accepted.

Elective Option #2

Full-Year Music Electives

- * Students can choose **ONE** of the music choices
- * Classes and levels are determined either by instrument or years of experience
 - Orchestra - Beginning **OR** Intermediate
 - Band - Woodwinds **OR** Brass & Percussion
 - Beginning Chorus (semester) w/ Theatre 6 (Semester)



Course Request Form (CRF)

- * A Gunston counselor will be visiting elementary schools to review the CRF process.
- * CRF's can be completed in Google forms. *(If you would prefer a paper copy, please contact your child's elementary counselor).*
- * Students **must be signed into their APS Google account to complete the Google CRF.**
- * **Parent and student** should complete the form **together.**
- * **READ** the instructions on the form carefully.
- * Choose **ONE ELECTIVE + ONE ALTERNATE ELECTIVE.**
- * The CRF can only be submitted **once.**

Link to CRF:

[ENGLISH: Rising 6th Grade Course Request Form](#)

Due Feb 23rd



Rising 6th Grade

Course Request Form 2024 - 2025

This Course Request Form (CRF) allows students and families to make course selections for the 2024 - 2025 school year. All Grade 6 students are required to take the following core courses: English, Math, Reading and/or Spanish, Science, Social Studies, and Health and Physical Education. Additional core courses may be required based upon a specific program in which a student is enrolled. **Descriptions of all courses can be found in the [APS Middle School Program of Studies](#)**

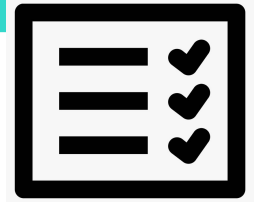
PLEASE NOTE:

- To complete the form, students **must** be signed into their APS Google account.
- This form can only be submitted **once**, so please check your selections carefully.
- To make the form valid, a parent **must** be present during submission of this form.

If you have any questions, please contact your elementary school counselor.

Thank You from the Gunston Counseling Team

Steps to Complete the CRF



STEP 1:

Complete the **DEMOGRAPHIC** information.

- Student Information
- Parent Information
- Current Elementary School

STEP 2:

Choose the **ACADEMIC PROGRAM**.

- Traditional
- Spanish Immersion
- Montessori
- English Learners

STEP 3:

Choose ONE first choice elective.

- Option 1 - Exploratory Wheel
- Option 2 - Full-Year Music

STEP 4:

Choose an **ALTERNATE ELECTIVE** if first choice is not available. It must be different than first choice.

- Option 1 - Exploratory Wheel
- Option 2 - Full-Year Music

STEP 5:

STUDENT must **VERIFY** information. There are 3 questions.

STEP 6:

PARENT/GUARDIAN must **VERIFY** information. There are 3 questions.

SUBMIT



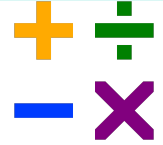
Academic Resources



- * **Math Pathways**
- * **Intensified Courses**
- * **Gifted Services**



6th Grade Math



Levels

Math 6
Pre-Algebra for 6th Graders

Families will be notified about math placements during the summer.

Information Considered for Math Placements

Overall performance in 5th grade
Growth assessments
SOL scores
Math readiness for the next level

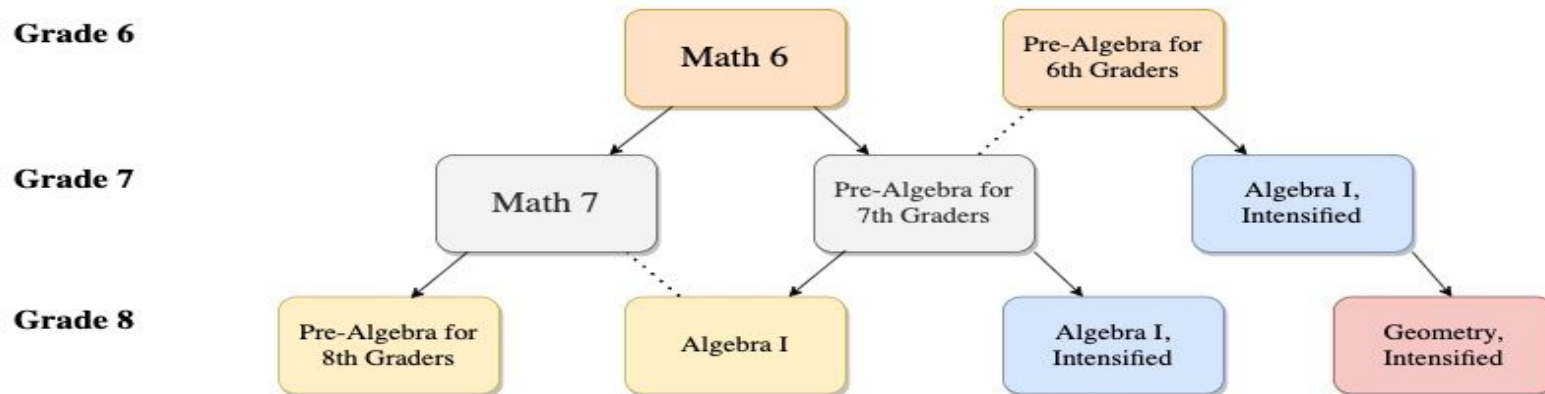
Recommendations

APS Secondary Mathematics Office

Mrs. Almerie Campbell
Math Coach

APS Math Pathways







Arlington Public Schools Middle School Mathematics Progression, SY 2023 - 2024



- Students needing additional support may be concurrently enrolled in Math 6, Math 7, or Pre-Algebra 8 along with an associated Strategies course.

Intensified Classes: What they are and what they are not



	Intensified English, science, and social studies courses will offer <u>a chance to go deeper into content/standards</u>		Intensified English, science, and social studies courses are <u>NOT accelerated courses</u> that go beyond grade level content
	Intensified English, science, and social studies courses <u>are open to all students who feel ready.</u>		There will be flexibility of <u>opting into</u> the intensified English, science, or social studies courses at any point in middle school <u>without needing prerequisites.</u>
	Teachers will use <u>resources designed for rigor and critical and creative thinking strategies regularly</u> to add depth and complexity within the existing curriculum.		Intensified courses will use the <u>same existing curriculum map</u> and have <u>built in extensions</u> to support going deeper into the standards

Intensified Courses for 24-25

	A	B	C	D
1	Content Area	Middle School Course Title	Course Code	School Sites
2	Intensified Courses	English 6, Intensified	11116	Hamm, Gunston, Jefferson, Kenmore, Swanson, Williamsburg
3	Intensified Courses	Science Grade 6, Intensified	14119	Hamm, Gunston, Jefferson, Kenmore, Swanson, Williamsburg
4	Intensified Courses	US History to Present Grade 6, Intensified	12350	Hamm, Gunston, Jefferson, Kenmore, Swanson, Williamsburg

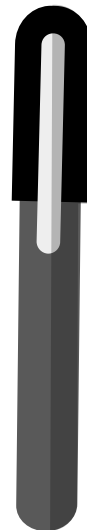
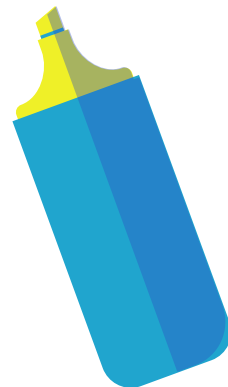




Arlington
Public
Schools



GIFTED SERVICES IN 6-8 CLASSROOMS



Collaborative Cluster Model at GMS Grades 6-8



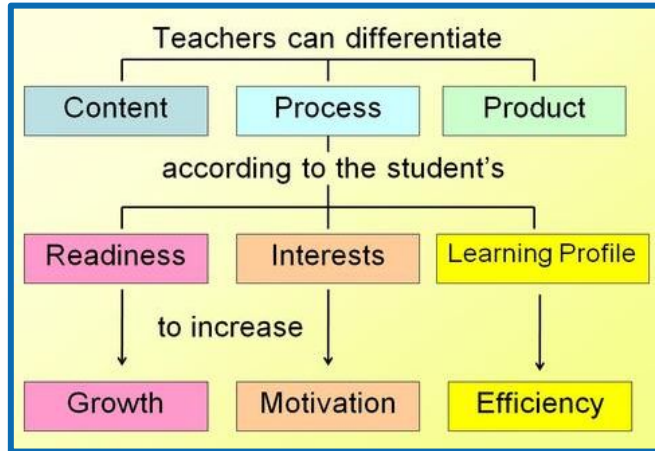
- Students can self-select to enroll in Intensified English, Science, or Social Studies classes.
- Students will be cluster grouped (at least 10 students identified as gifted) in selected intensified courses.
- Teachers are responsible for delivering comprehensive services for gifted learners with ongoing coaching and support from the Advanced Academics Coach (AAC)

THU

FRI

WKND

DIFFERENTIATION



"Differentiation is simply a teacher attending to the learning needs of a particular student or small groups of students, rather than teaching a class as though all individuals in it are basically alike." -Carol Ann Tomlinson

- **Content:** What is to be learned
- **Process:** How students acquire information
- **Product:** How students demonstrate learning
- **Learning Environment:** Where and with whom students learn

MON

TUE

WED

THU

FRI

WKND

COLLABORATIVE TEACHING



Collaborative Teaching
may involve:

- Whole group team teaching with classroom teacher
- Small group teaching in classroom, coordinated and co-planned with classroom teacher
- Co-planning with classroom teacher to support differentiation on days when gifted resource teacher is not in the classroom
- Flexible grouping, which may be determined by
 - Pre-assessment data
 - Needs of students and/or the classroom teacher
 - Difficulty of unit/topic

Critical & Creative Thinking Framework



Arlington Public Schools

K-12 Critical and Creative Thinking Models & Strategies

Critical Thinking Teaching Models

- Concept Development Model (Change, Patterns, Systems, Perspective, Cause/Effect)
- Future Problem Solving
- Jacob's Ladder
- Paul's Reasoning Model
- Problem-Based Learning
- Project-Based Learning
- Research Model
- Socratic Seminar
- William and Mary Teaching Models (Vocabulary & Literature Web, Persuasive Writing, Analyzing a Historical Situation)

Creative Thinking Models

- Creative Problem Solving (CPS)
- SCAMPER

Categories of Thinking Strategies

Decisions and Outcomes

- Habits of Mind
- PMI
- Visualization

Making Connections

- Analogies
- Encapsulation
- FFOE (Fluency, Flexibility, Originality, Elaboration)
- Mind-Mapping
- Syntectics

Point of View (Different Perspectives)

- Debates
- deBono's Hats
- RAFT
- Socratic Seminar/Junior Great Books
- Structured Academic Controversy

Questioning

- Question Formulation Technique (QFT)
- Levels of Questioning
- Revised Bloom's Taxonomy

After-School Activities

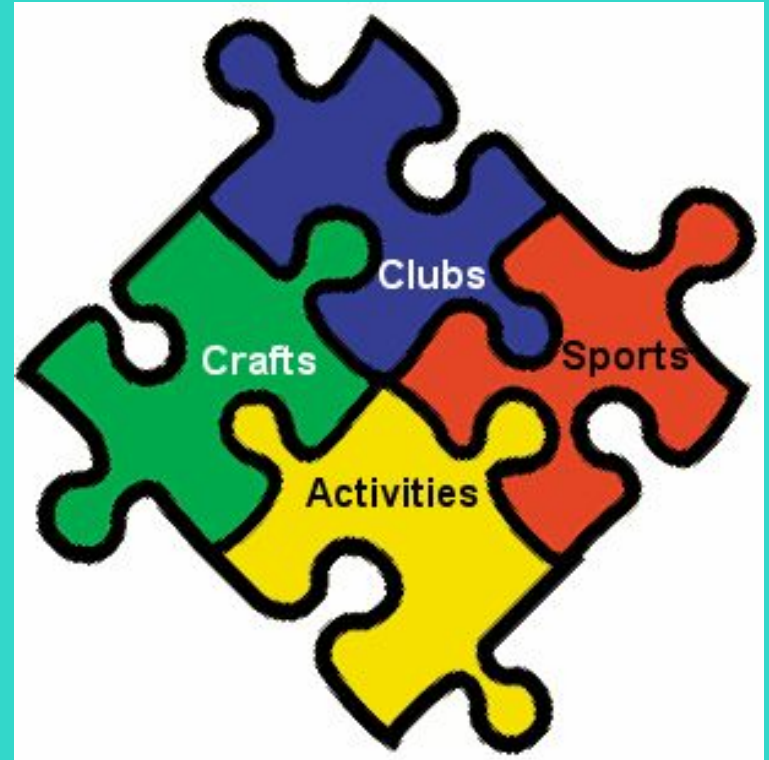
PM 1: 2:40 pm - 3:10 pm

PM 2: 3:15 pm - 4:05 pm

Late Bus: 4:20 pm

Sports Bus: End of Event

**Must be in a supervised activity
during all after-school activities.**



Sports

Tryout Sports

- * Cheerleading
- * Tennis
- * Swimming
- * Basketball
- * Soccer

Non-Tryout Sports

- * Ultimate Frisbee
- * Wrestling
- * Track
- * Volleyball Club

- * **Medical (sports) physical is required to participate**
- * **Must be in good academic standing**
- * **Each sport runs for approximately 7 weeks**



Clubs & Organizations



- * Academics - Teacher Office Hours
- * Skill Development
- * Community & Student Connections

All teachers have Office Hours for academic support twice per week after school.



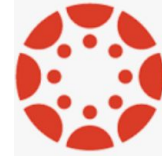
Home-School Partnership

- * Gunston Website
- * Canvas Parent Observer Account
- * ParentVUE
- * ParentSquare
- * Weekly School Talk Messages
- * Family & Community Engagement (FACE)



Canvas Parent Observer Account

- * Learning management system where you can see your child's current progress and feedback from teachers



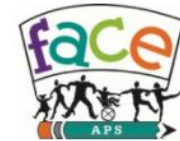
ParentSquare

ParentSquare is a unified communications platform. The division, your student's school and teachers use ParentSquare to communicate with families. This includes emergency messages as well as everyday information closely related to the school's educational mission. It provides a safe way for administrators, school principals, teachers, staff, and families to stay connected.



Family & Community Engagement (FACE)

- * The shared responsibility between families, school, and community to support students in their academic journey & social emotional well-being



Additional Resources or Videos

[24-25 Middle School Program of Studies](#)

[Gunston Elective Choices](#)

[Spanish Immersion Program at Gunston](#)

[Canvas Parent Observer Account Instructions](#)



Questions

