

# **GUNSTON MIDDLE SCHOOL**

**Rising 7/8**

**Academic Advising**

January 14, 2025



# GUNSTON ADMINISTRATORS



**Dr. Rivas**  
Assistant Principal  
Rising 6th Grade



**Ms. Ellis**  
Assistant Principal  
Rising 7th Grade



**Ms. Sanchez**  
Assistant Principal  
Rising 8th Grade



**Dr. Jackson**  
Principal



**Mr. Stewart**  
Dean of Students



**Ms. Frater**  
Director of Counseling



**Mr. Matos**  
Activities Coordinator

# STUDENT SERVICES TEAM

## Rising 7 and 8 Counselors

**Ms. Gibbs**



Rising 7th Grade  
Traditional & Montessori

**Ms. Carr**



Rising 8th Grade  
Traditional & Montessori

**Ms. Kolody**



Immersion  
Grades 6-8

**Ms. Cordero**



English Learners (EL)  
Grades 6-8

## Additional Counseling Staff

**Ms. Frater**



Director of Counseling

**Ms. Mitchell**



Rising 6th Grade  
Traditional & Montessori

**Ms. Greene**



Intervention Counselor

**Mr. McCoy**



Substance Abuse Counselor

# STUDENT SERVICES TEAM

## Additional Support Staff

**Ms. Casanova**



**School Psychologist**

**Ms. Shimizu**



**Social Worker**

**Ms. Merck**



**Interlude Therapist**

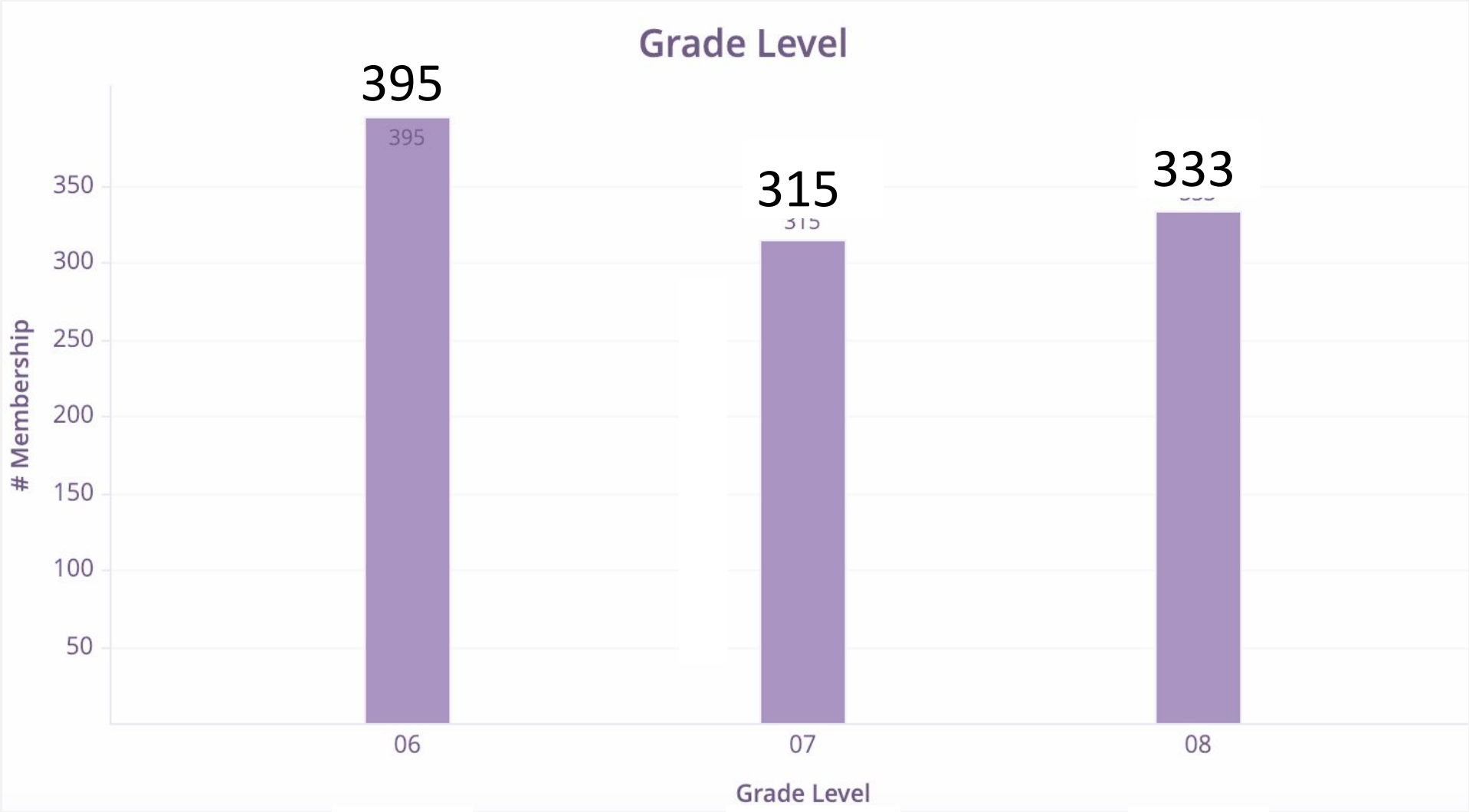
**Ms. Morehead**



**Clinician**

# GUNSTON DEMOGRAPHICS

## Membership by Grade Level



6th

7th

8th

# ACADEMIC PROGRAMS

Traditional

Immersion

Montessori



# Intensified Classes

## English/Language Arts

- English 7, Intensified
- English 8, Intensified

## Science

- Grade 7 Life Science, Intensified
- Grade 8 Physical Science, Intensified

## Social Studies

- Civics and Economics, Intensified (Grade 7)

### What are the benefits of taking intensified classes?

- Prepares students for the academic challenge of high school; & success in future advanced classes
- Gives a sense of accomplishment and increases self-esteem
- Develops critical thinking skills
- Improves study skills and time management

### What are some habits for success in intensified classes?

- Doing more than the minimum requirements
- Completing assignments without prompts or reminders
- Meeting deadlines
- Asking for help or putting in extra time when needed

# Math Placements

7th Grade	8th Grade
Math 7 Pre-Algebra for 7th Graders Algebra I, Intensified HS	Pre-Algebra for 8th Graders Algebra I HS Algebra I, Intensified HS Geometry, Intensified HS

- Determined by APS Secondary Math Office
- Overall performance in previous grade
- Countywide assessments
- SOL scores
- Math readiness for the next level

# APS Math Pathway

**Grade 6**

Math 6

Pre-Algebra for  
6th Graders

**Grade 7**

Math 7

Pre-Algebra for  
7th Graders

Algebra I,  
Intensified

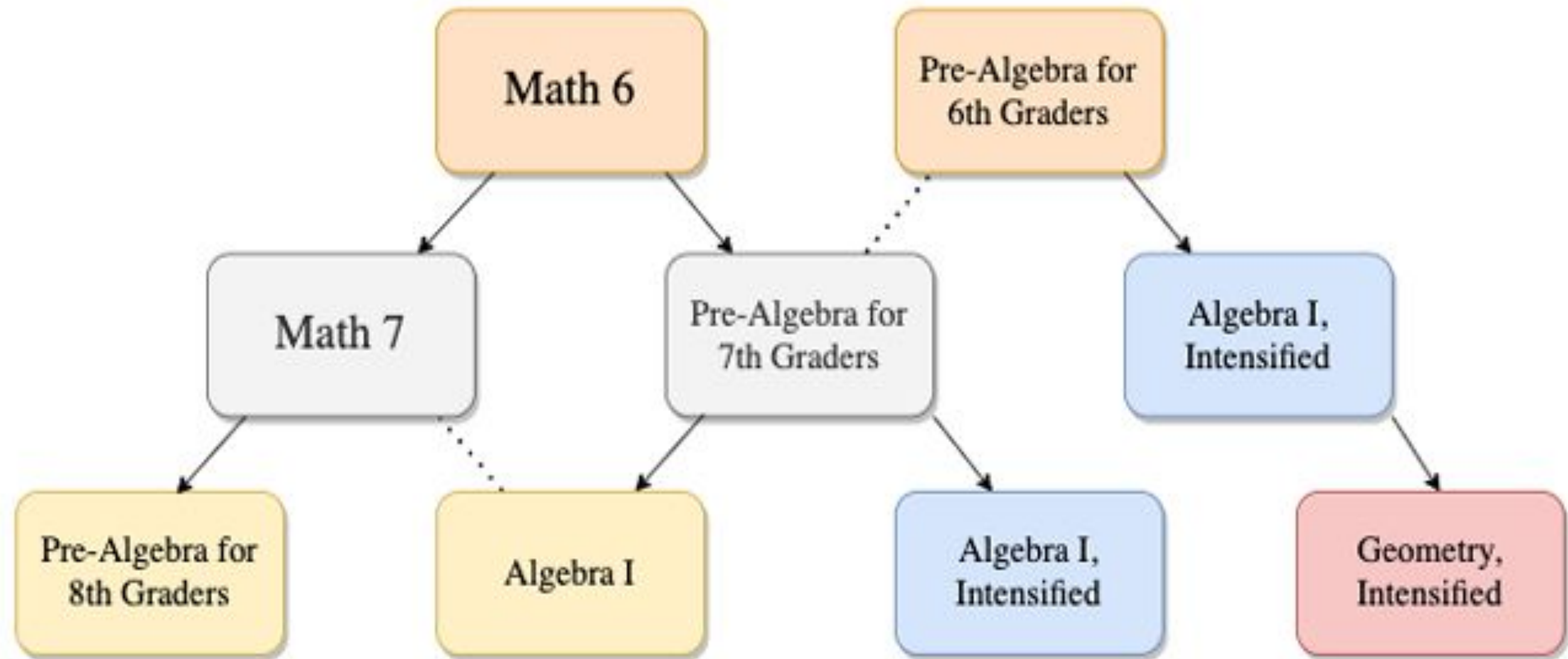
**Grade 8**

Pre-Algebra for  
8th Graders

Algebra I

Algebra I,  
Intensified

Geometry,  
Intensified

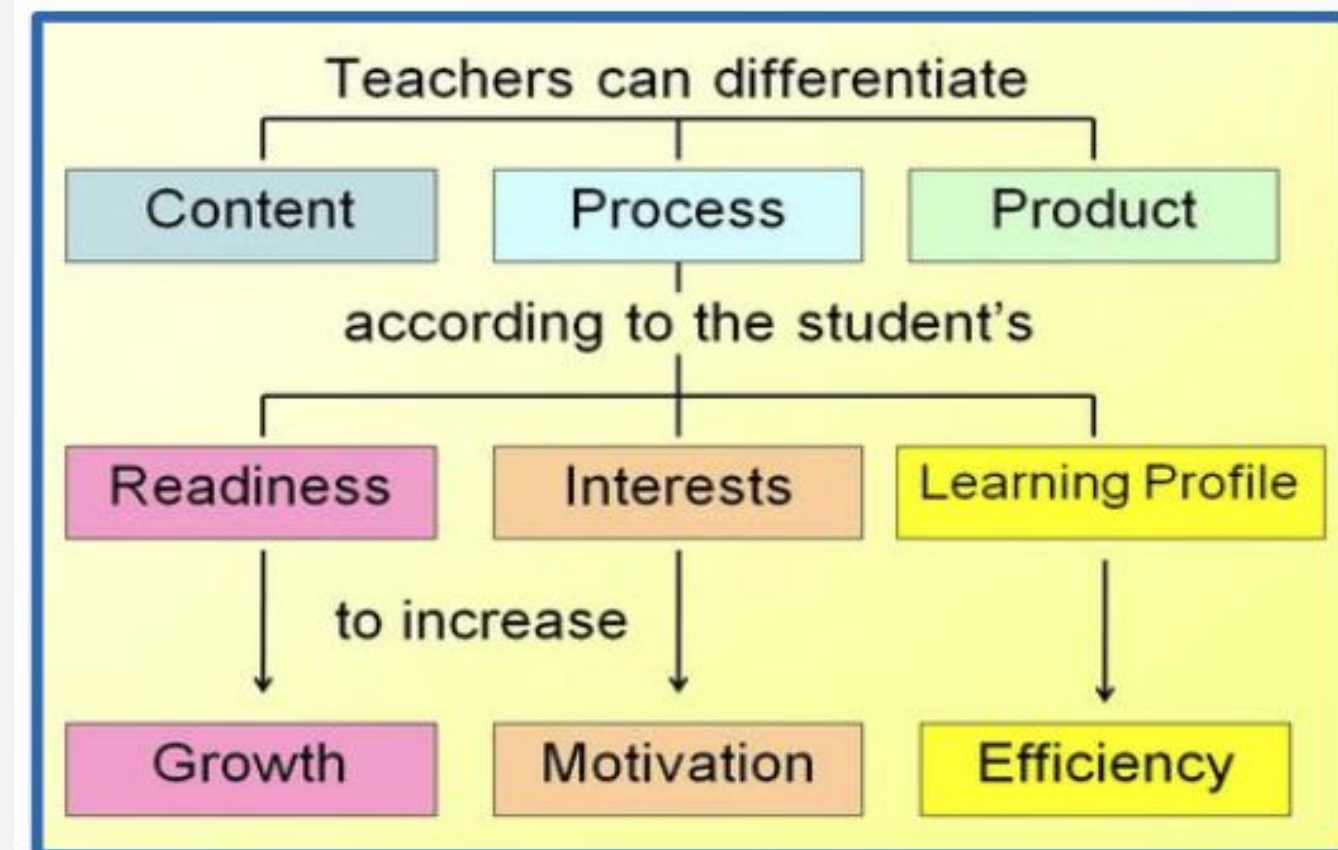


# GIFTED SERVICES

## Collaborative Cluster

- Students can self-enroll in Intensified English, Science, and Social Studies classes.
- Students will be grouped into clusters (at least 10 students identified as gifted) in selected intensified classes.

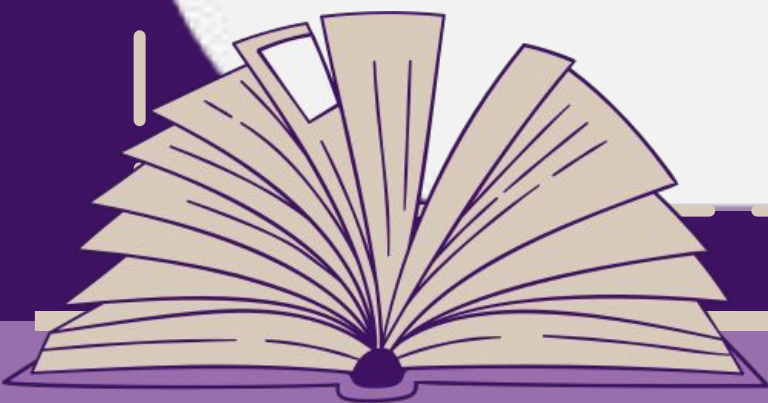
## Differentiation



# Traditional

7th Grade	8th Grade
English 7	English 8
Math	Math
Civics & Economics	+World Geography
Life Science	Physical Science 8
Health/PE 7	Health/PE 8
Electives	Electives

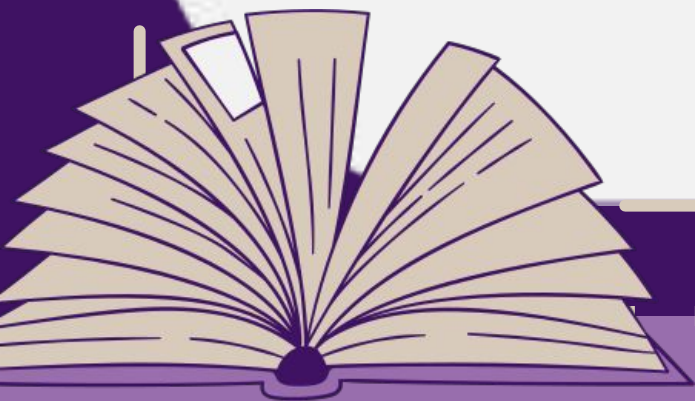
**+ HS credit**



# Immersion

7th Grade	8th Grade
English 7	English 8
Math	Math
Immersion Civics & Economics	+Immersion World Geography
Immersion Life Science	Immersion Physical Science
+Spanish Language Arts 7	+Spanish Language Arts 8
Health/PE 7	Health/PE 8
Elective	Elective

**+ HS credit**



# Montessori

7th Grade	8th Grade
Montessori English 7	Montessori English 8
Math	Math
Montessori US History	+Montessori World Geography
Montessori Life Science	Montessori Physical Science
Health/PE 7	Health/PE 8
Electives	Electives

**+ HS credit**



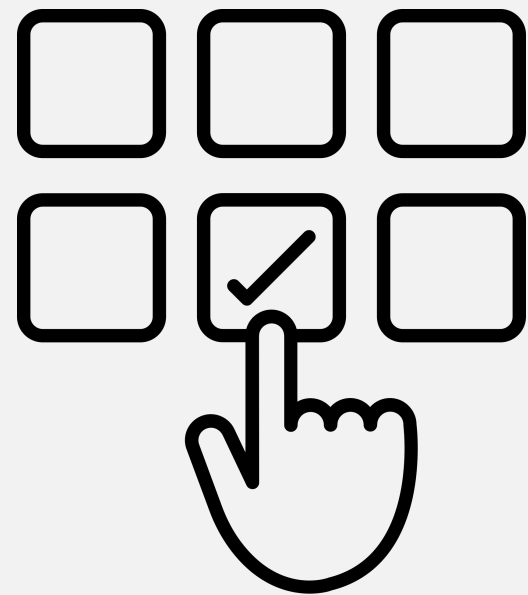
# English Learners Development

EL 7th and 8th grade students  
are grouped by English  
language proficiency into four  
levels.

Level 1	Levels 2 - 4
English (ELD)	English (ELD)
ELD (ELD Reading)	ELD (ELD Reading)
ELD Social Studies	Social Studies or +World Geography
ELD Science	Science
Math	Math
Health/PE	Health/PE
Elective	Elective



# Semester Electives



## 7th Grade

Beginning Chorus

Digital Input Technologies

Inventions & Innovations

Media Journalism

Teen Living

Theater Arts

Visual Arts I

## 8th Grade

Beginning Chorus

Computer Applications & Internet Technologies

Technological Systems

Life Management

Theater Arts

Visual Arts I

# Full-Year Electives

+ HS credit

7th Grade
Intermediate Band
Advanced Band
Beginning Orchestra
Intermediate Orchestra
Advanced Orchestra
Advanced Chorus
Guitar
+World Languages

8th Grade	
Intermediate Band	Journalism
Advanced Band	+Computer Programming MS
Beginning Orchestra	+Technology of Robotic Design
Intermediate Orchestra	+World Languages
Advanced Orchestra	Guitar
Advanced Chorus	

# World Languages

+ HS credit

## 7th Grade

American Sign Language I

Arabic I

Chinese I

French I

Spanish I

Spanish for Fluent  
Speakers I

Spanish Language Arts 7  
(IMM only)

## 8th Grade

American Sign Language I  
or II

Arabic I or II

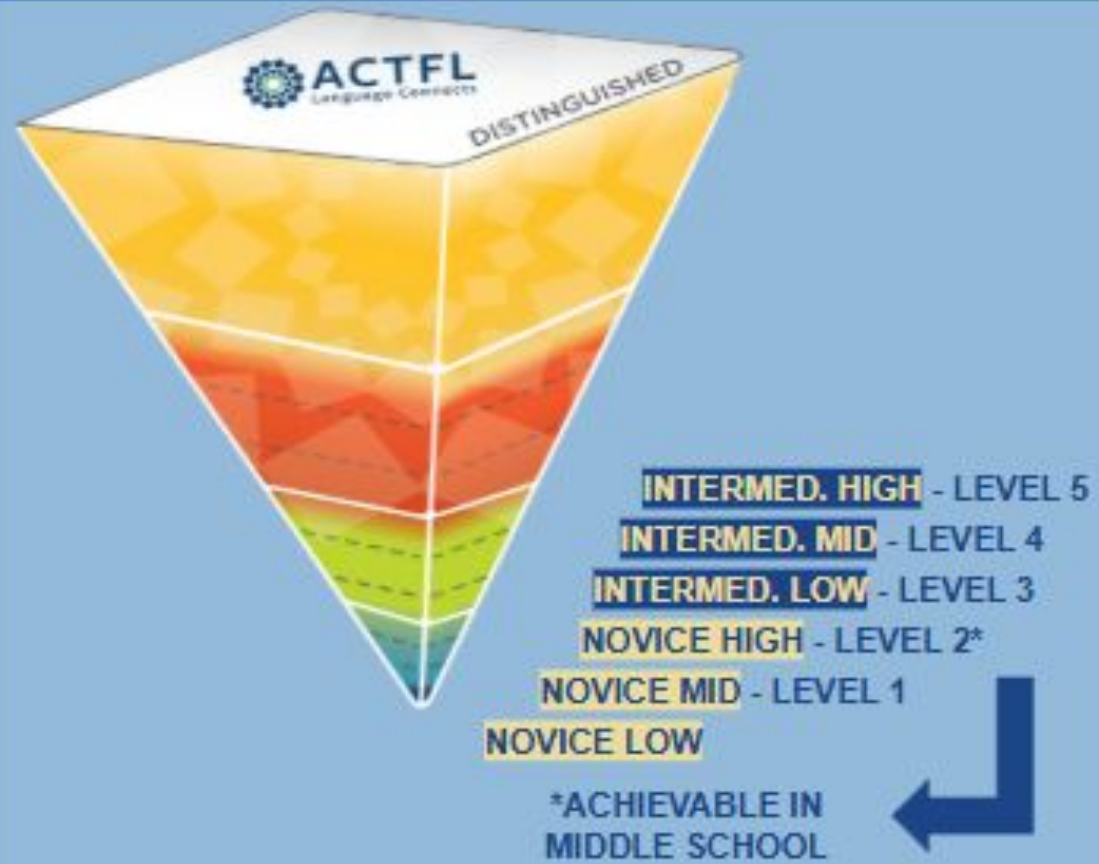
Chinese I or II

French I or II

Spanish I or II

Spanish for Fluent  
Speakers I or II

Spanish Language Arts 8  
(IMM only)



## WORLD LANGUAGE EXPECTATIONS & SUPPORTS

- Students should take a language in middle school with the **intent of reaching the highest level/most rigorous coursework** offered in high school  
*(Dual Enrollment, Advanced Placement, International Baccalaureate)*
- Students have an opportunity to test for and earn eligibility for the **Seal of Biliteracy** embedded in their upper-level coursework
- Aside from Virginia Advanced Studies Diploma requirements, universities are looking to see **four years of language learning in high school**  
*(Building on work done in middle school; committing to the 2nd language if switching after two years)*

## BENEFITS OF LEARNING ANOTHER LANGUAGE

- Enhanced problem-solving & self-confidence
- Improved verbal and spatial abilities
- Improved memory function
- Increased standardized test scores
- Increased flexible and creative thinking
- Expanded vocabulary in native language
- Expanded perspective of associated culture

# WORLD LANGUAGE ELECTIVE OPTIONS

## Languages Offered:

American Sign Language (ASL)

Arabic

Chinese

French

Latin

Spanish

Spanish for Fluent Speakers (SFS)

## Advanced Studies Diploma

Minimum World Language requirements for students to be eligible to earn an *Advanced Studies Diploma* upon graduation:

- Three years of one language
  - *Arabic 1, 2, & 3*
- OR
- Two years of two languages
  - *Spanish 1 & 2 and ASL 1 & 2*



\* All full-year language courses are high school credit-bearing courses.

## SAMPLE WORLD LANGUAGE PROGRESSION

*(Intro, Wheel, & Exploratory courses may be offered in 6th Grade)*

	7th Grade	8th Grade	9th Grade	10th Grade	11th Grade	12th Grade
Start in 7th	Level 1	Level 2	Level 3	Level 4	Level 5/DE/IB 1	AP/IB 2
Start in 8th	-	Level 1	Level 2	Level 3	Level 4	Level 5/DE
Start in 9th	-	-	Level 1	Level 2	Level 3	Level 4

# Course Request Form (CRF)



Gunston Middle School  
Rising 7th Grade  
Course Request Form  
2025- 2026

Student Name: \_\_\_\_\_

Student ID: \_\_\_\_\_

This Course Request Form allows students and families to make course selections for the 25-26 school year. Additional core courses may be required based upon the specific program in which students are enrolled. Descriptions of all courses can be found in the APS Middle School Program of Studies. Beginning in SY 23-24, students in 7th grade who are seeking a more rigorous learning experience will have an opportunity to take intensified courses in one or more subjects: English, Science, and Social Studies. **NOTE:** Placement into intensified courses will be determined based on capacity and availability. If your child would like to take an intensified course(s), please put an **X** next to the intensified course(s):

## Academic Programs

Intensified English (11117)     Intensified Science (14117)     Intensified Civics & Economics (12357)

- The paper CRF can only be completed **ONCE**.
- Both student and parent should complete the form together.
- Counselors will help students complete CRF to bring home for parent revision & signature.
- Students should return CRF to counseling within 3 school days of receipt.

# Completing the CRF

## STEP 1:

Complete the **DEMOGRAPHIC** information.

## STEP 2:

Choose the **ACADEMIC PROGRAM**

## STEP 3:

Choose **ONE FIRST CHOICE ELECTIVE**

## STEP 4:

Choose an **ALTERNATE ELECTIVE** if first choice is not available.  
It must be different than first choice.

## STEP 5:

**STUDENT** must **VERIFY** information. There are 3 questions.

## STEP 6:

**PARENT/GUARDIAN** must **VERIFY** information. There are 3 questions.

### Traditional or Montessori

2 Full-Year  
OR  
1 Full-Year + 2 Semester  
OR  
4 Semesters

### Immersion or English Learners

1 Full-Year  
OR  
2 Semesters

# **ACADEMIC ADVISEMENT**

**Diploma Options**

**High School Programs**



# High School Terms to Know

**Credit:** Unit earned upon successful completion of a high school course

**Verified Credit:** Unit earned by passing end-of-course SOL's in high school courses

**Transcript:** Document that lists all of the high school courses that were taken and the grades earned

**Grade Point Average (GPA):** Calculation through the number of classes taken and the quality points for each grade earned in high school courses

**\*Advanced Placement (AP):** Rigorous high school courses where both high school and college credits can be earned

**\*Dual-Enrolled Courses:** Courses that allow a high school student to be enrolled in high school and college courses at the same time

**\*AP and Dual Enrollment are available at all APS high schools.**

# Diplomas

**Advanced: 26**

**Standard: 22**

	Advanced	Standard	Verified
Subject	Credits	Credits	SOL credits
English (Reading & Writing)	4	4	2
Math	4	3	1
History / Social Sciences	4	3	1
Science	4	3	1
World Language (required for Advanced Diploma)	3 or 4 3 years of one language OR 4 years = 2 years of 2 languages	Language is optional	
Fine Art <u>OR</u> CTE (required for both diplomas)	1	2	
Health/PE	2	2	
Electives	3	4	
Economics & Personal Finance	1	1	
<b>TOTAL</b>	<b>26</b>	<b>22</b>	<b>5</b>

# Arlington Tech

- Rigorous, project-based learning, high school program that prepares students to succeed in college and in the workplace through collaborative problem solving
- Focuses on: STEM, Career & Technical Education (CTE), College-Prep
- Dual-enrolled classes to work toward an Associate's Degree
  
- Be an APS student
- Have passed the 7th grade Math SOL



# HB Woodlawn Secondary Program

All APS students are eligible to apply; selections are made through a blind lottery

## Central Focus - Student Choice:

- Use of Time & Personal Behavior
- Educational Goals
- School Governance



# Wakefield High School



## Spanish Immersion Program

- Continue Immersion in Language Arts, Science, Math
- Graduate with a Seal of Biliteracy & Certificate of Excellence from Embassy of Spain
- Gunston students automatically transfer unless they choose their neighborhood school or a different program

## Advanced Placement Network (AP)

- Opportunities to take college-level courses in high school and receive credit, advanced placement, or both when they enter college
- Students, who live outside of attendance area for Wakefield, **must apply** to the program - doesn't apply to Immersion students

## Freshman Foundations

- Team approach by grouping 9th graders with the same content teachers to support with transition to high school

# Washington-Liberty High School

The International Baccalaureate (IB) diploma curriculum offers a rigorous and comprehensive education based on a global perspective focusing on intercultural understanding and respect.

## Eligibility Requirements for Pre-IB:

- Algebra I in middle school
- World Language - Level I (7th) **and** Level II (8th) in middle school
- **Please note:** American Sign Language does not count toward the IB Diploma
- A's and B's in all subjects
- Short answer/essay questions as part of application



# Yorktown High School

Students who are exiting the Immersion program or Montessori students who plan to attend their neighborhood school

## Focus Areas:

- Equity, Excellence, Empowerment
- Community Leadership and Engagement



# Thomas Jefferson High School for Science & Technology

- A comprehensive, college-prep STEM program in Fairfax County
- APS is a participating jurisdiction and 8th graders can apply
- Transportation is provided if accepted



## Eligibility Requirements:

Immersion	Montessori	Traditional
<ul style="list-style-type: none"><li>• Must be in Algebra I Intensified or higher</li><li>• Must be in English 8 Intensified</li></ul>	<ul style="list-style-type: none"><li>• Must be in Algebra I Intensified or higher</li></ul>	<ul style="list-style-type: none"><li>• Must be in Algebra I Intensified or higher</li><li>• Must be in English 8 Intensified</li><li>• Must be in Physical Science Intensified</li></ul>

**Students need 3.5 GPA or higher to be eligible.**

# **ADDITIONAL RESOURCES**

**Middle School Program of Studies**

**High School Program of Studies**

**Links to Each High School Program**



# IMPORTANT LINKS

[APS Middle School Program of Studies](#)

[APS High School Program of Studies](#)

[Arlington Tech](#)

[HB Woodlawn](#)

[Wakefield High School](#)

[Washington Liberty High School](#)

[Yorktown High School](#)

[Thomas Jefferson High School for Science and Technology](#)

# QUESTIONS

